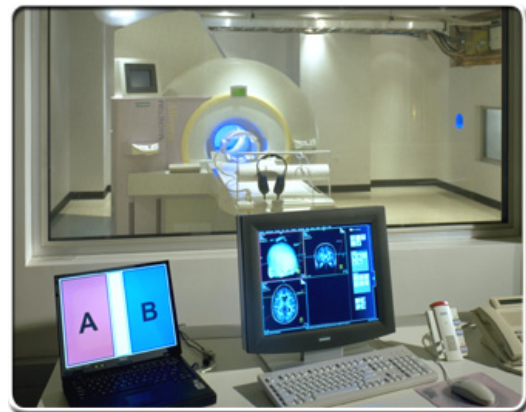
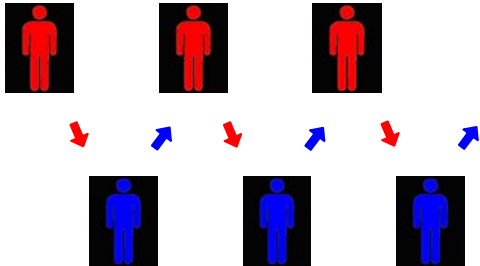


A FUNCTIONAL MRI STUDY OF SOCIAL INTERACTIONS

WHY?

People can experience a variety of problems in their relationships with others. For example, some people repeatedly find themselves in turbulent relationships, others find they lack the energy to maintain rewarding relationships, and still others are fearful in social settings. While these can be a tremendous burden for those experiencing the problems, little is understood about the biological basis of these problems. In this study, we use state-of-the-art technology to investigate how the brain functions during social interactions.



WHAT DO PARTICIPANTS DO?

Initial Screening:

We first provide a detailed overview of each portion of the study and answer any questions you have. We then ask you some questions to determine whether you are appropriate for the interview portion of our study.

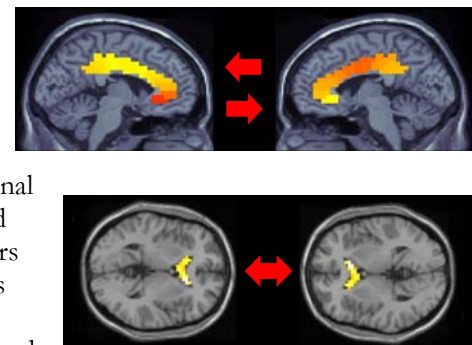
Interview:

For the first appointment, you participate in an interview regarding past and present difficulties you may have had. The interview is videotaped in order to ensure consistency and quality of interview procedures. You will also fill out some brief questionnaires. The purpose of this interview is to determine whether you are appropriate for the brain scanning portion of the study. This visit lasts 6 to 8 hours.

Brain scanning:



This visit takes place at the Human Neuroimaging Laboratory at Baylor College of Medicine. During this visit you play a simple game with another person while your brain activity is monitored using functional magnetic resonance imaging (fMRI). You and another participant will be in separate scanners and be able to interact through visual displays that are connected to each other. The brain scanning will last approximately 30 minutes, and you will be at the lab for an additional hour during this visit.



To PARTICIPATE:

Do these questions describe you?

- * Are you an adult woman who has been feeling down or depressed for over a week with little relief?
- * Are you finding it hard to concentrate on even simple tasks?
- * Have you noticed changes in your appetite or sleep patterns?
- * Have you received a diagnosis of depression?
- * Are you currently residing in Houston, TX and its surrounding areas?
- * Are you right handed?

OR

Do these questions describe you?

- * Do you have mood swings?
- * Do you fear abandonment by those you trust the most?
- * Do you do things on impulse that get you into trouble?
- * Do you often feel empty inside?
- * Are you right handed?
- * Are you currently residing in Houston, TX and its surrounding areas?

If these either of these set of questions describe you, please call to see if you qualify to participate in a brain imaging study at Baylor College of Medicine.

You will be compensated \$10 per hour of your time to complete some interviews about your feelings and experiences and an additional \$20 to \$40 depending on how you perform in a simple interactive video game played in our MRI scanner.

**To RECEIVE MORE INFORMATION AND COMPLETE AN INITIAL TELEPHONE SCREENING :
PLEASE CALL US AT (713) 275-5512**